

INSTALLATION MANUAL

58268

Level of Difficulty

Easy

Installation difficulty levels are based on time and effort involved and may vary depending on the installer level of expertise, condition of the vehicle and proper tools and equipment.

Parts List

Item	Qty	Description
1	1	Accessory sensor, top half
2	1	Accessory sensor, bottom half
3	1	Wiring harness
4	2	Socket head cap screw, 5/32"
5	2	Flat washer
6	2	Nylock nut
7	10	Zip tie

Tools Required

Ratchet	Allen wrench, #4 metric
Socket extension	Cutting tool
Torx bit, T-20	--

⚠ WARNING

Do not exceed product rating or tow vehicle lamp load rating, whichever is lower.

Product Photo



NOTICE

Visit www.curtmfg.com for a full-color copy of this instruction manual, as well as helpful videos, guides and much more!

Before you begin installation, read all instructions thoroughly.

Proper tools will improve the quality of installation and reduce the time required.

All steps must be followed to ensure the product will function properly. Once installed, test for proper function by using a test light or connecting a properly wired trailer.

When the hitch cover is flipped **open** to accept an accessory, the inner tailgate panel will not operate.

When the hitch cover is **closed**, the inner tailgate panel will operate normally.

In either open or closed position the truck's taillights will flash when the button on the truck or key fob is pushed.

Periodic inspection of all wires and connections should be performed to ensure there is no visible damage or loose connections.

Product Registration and Warranty

CURT stands behind our products with industry-leading warranties. To get copies of the product warranties, register your purchase or provide feedback, visit: warranty.curtgroup.com/surveys

Step 1

To assemble the accessory sensor, place the top half of the sensor (#1) over the top of the receiver tube. Place the bottom half of the sensor (#2) around the bottom of the receiver tube. The two components will fit together to enclose around the receiver tube.

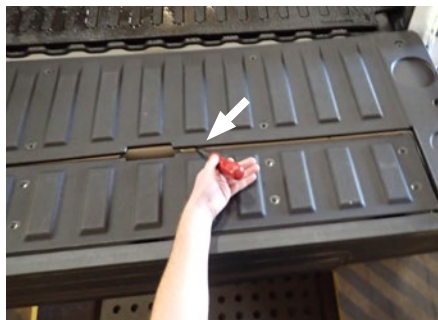
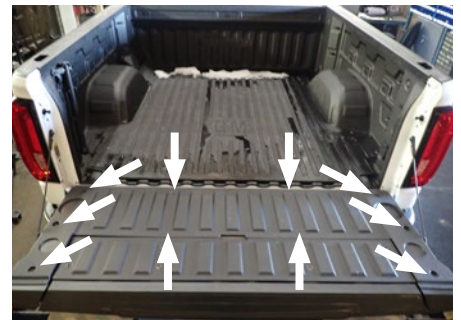
To secure the two halves together, place the provided flat washers (#5) over the two socket head cap screws (#4). Insert the assembled screws through the top half of the sensor and secure with nylock nuts (#6) on the bottom half of the sensor.. Use a 5/32" Allen wrench to tighten. **Note:** Tighten each side in equal increments to make sure the sensor stays square on the receiver tube.



Step 2

Open tailgate by pressing the lower button. Use a Torx T-20 bit to remove the 10 screws in the main part of the tailgate as shown and set aside.

Lift the plastic panel closest to the truck bed up and locate the single push fastener in the center of the panel. Remove the push fastener using a trim panel removal tool and set the plastic panel aside.



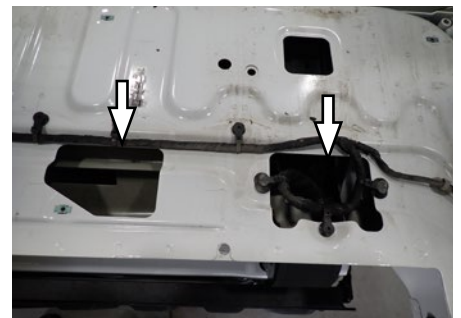
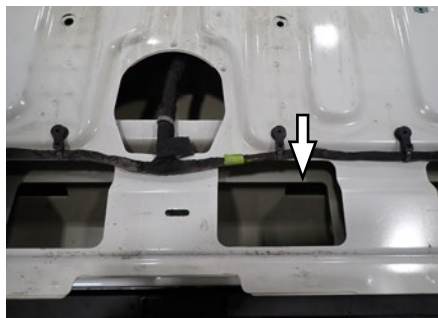
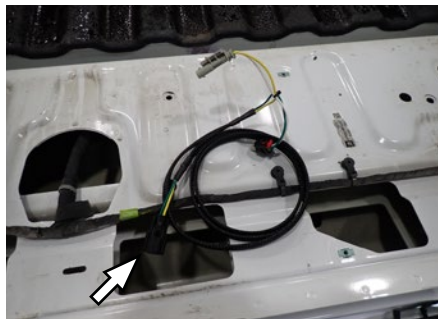
Step 3

Open the multipro tailgate step/bed extender. Use a trim tool to remove the two square filler caps on the passenger side, being careful to not dent or scratch them.



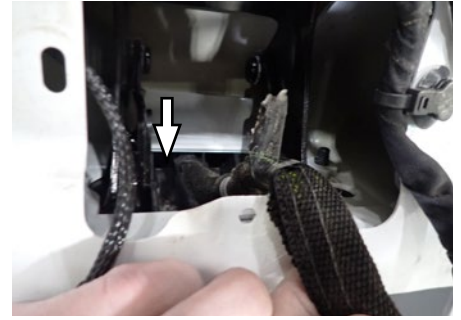
Step 4

Locate the custom T-end wiring harness on the end with a single electrical connector. Route this end into the tailgate at the center, following the factory wiring out the bottom of the tailgate and into the box of the truck. Route the harness inside of the tailgate to the passenger-side multipro gate hinge.



Step 5

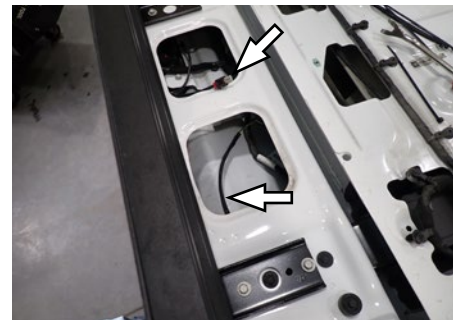
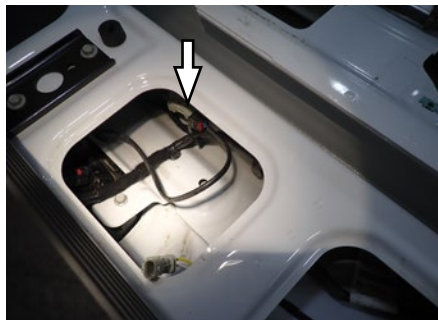
Use a pry tool to remove the push fasteners securing the factory harness to the tailgate. Route the custom wiring harness down inside the channel of the hinge with the factory wiring.



Step 6

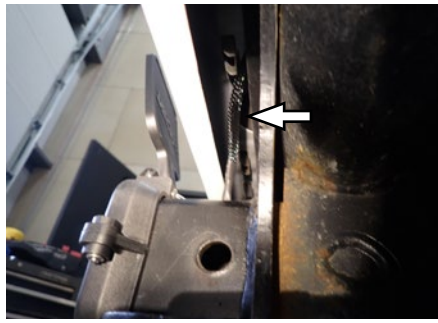
Locate the factory connector for the tailgate latch inside the center of the tailgate. Carefully disconnect the factory connector by pushing the red locking tab toward the wires, then push the connector together and press the connector lock and pull the connectors apart.

Route the custom wiring harness to the center of the tailgate and connect the harness.



Step 7

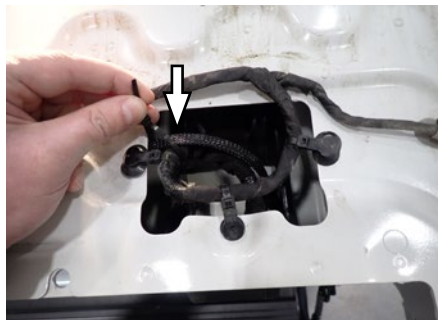
From under the vehicle, route the receiver tube sensor electrical housing over to the side of the hitch main body. This allows the harness to be routed between the bumper and the hitch and connect to the connector that was fed out of the tailgate and below the bed of the vehicle in step 4. Use a cable tie to secure the harness to the vehicle. **Be sure the sensor door is in the closed position.** This will allow your tailgate to function as needed.



Step 8

Starting on the T-end or tailgate latch, use cable ties as needed to secure the harness in place. Leave loose at this time for proper fitment of wiring harness.

Open and close the tailgate's multi-function (close the whole gate if needed). Make sure the harness isn't being pinched, especially at the hinge point between the multi-function. Tighten the cable ties and trim as needed, and reinstall the removed panels in reverse order of how they were removed.



NOTICE

Your tailgate will only function when the door on the sensor is in the closed position and nothing is in the receiver tube. If the door is open, the gate will only function as a standard tail gate (top button will not function, bottom will still function as intended).

